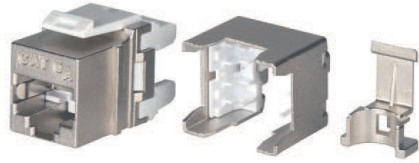


SHIELDED FAST TERMINATION KEYSTONE JACKS



8P8C shielded RJ45 fast termination keystone jacks

Frequency Range:	1-500 MHz
Compatible Conductors:	22-24 AWG
Pin-Pair Assignment:	T568A & T568B
Contacts:	Phosphor Bronze Alloy Plated with 50 micro-inch of Gold
Shield:	Die-cast metal case
Housing:	Zinc-alloy fully shielded

KEY FEATURES

- PoE++ with EC verified
- UL Listed
- Optimizing the NEXT in both ends on a channel.
- It is terminated by a Punch-Down Tool or a Fast-Termination Tool
- Compatible for 24-port applications in 1U blank patch panel
- Easily snap in and out of patch panel and surface boxes or other application.
- RoHS Compliant.

SPECIFICATIONS

Orientation:	180°
Termination Blocks:	110 IDC (Phosphor bronze alloy with 100 micro-inch 100% Sn Alloy)
Insertion/Withdrawal:	750 cycles
Cable Re-Termination:	20 cycles
Operating Temperature:	-20 to +60C at 5-95% RH (non condensing)
Ampacity:	2A max.
Contact Resistance:	20 mOhm max.
DC Resistance:	0.1 Ohm max.
Voltage Rating:	75 Vdc max.
Insulation Resistance:	500 MegaOhm min. @100 Vdc
Tools:	Fast Termination Tool or Punch Down Tool

Compatible with 24-port & 48-port 1U panels

ORDERING INFORMATION

PART CODE	DESCRIPTION
DSC-KJFT6A2SVB	Cat.6A FTP Fast Termination Jack (4PPoE, 2A)